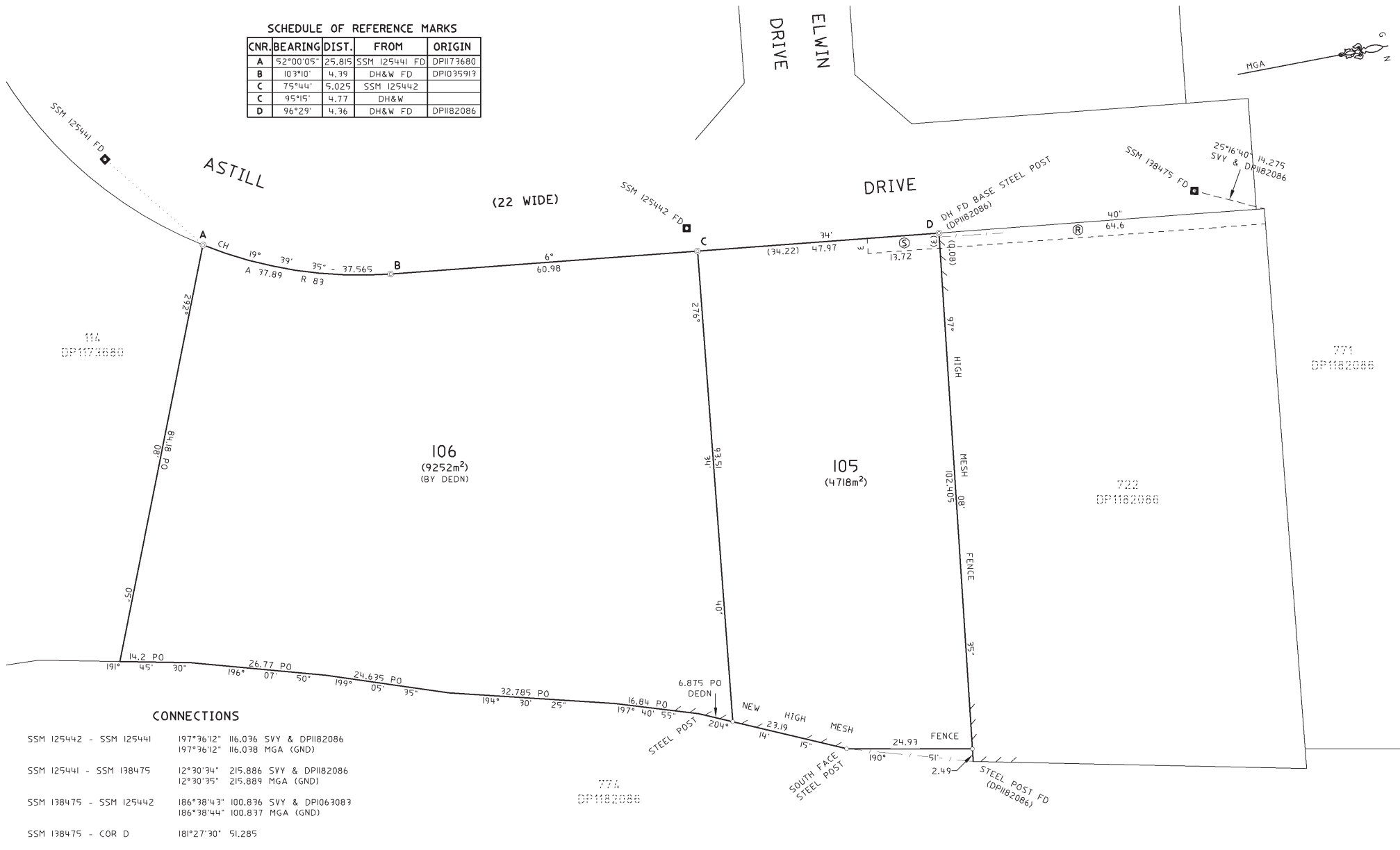


**SCHEDULE OF REFERENCE MARKS**

CNR.	BEARING	DIST.	FROM	ORIGIN
A	52°00'05"	25.815	SSM 125441 FD	DPI173680
B	103°10'	4.39	DH&W FD	DPI035913
C	75°44'	5.025	SSM 125442	
D	95°15'	4.77	DH&W	
	96°29'	4.36	DH&W FD	DPI182086



**CONNECTIONS**

SSM 125442 - SSM 125441	197°36'12"	116.076	SVY & DPI182086
	197°36'12"	116.078	MGA (GND)
SSM 125441 - SSM 138475	12°30'34"	215.886	SVY & DPI182086
	12°30'35"	215.889	MGA (GND)
SSM 138475 - SSM 125442	186°38'43"	100.836	SVY & DPI063083
	186°38'44"	100.837	MGA (GND)
SSM 138475 - COR D	181°27'30"	51.285	

- Ⓡ EASEMENT TO DRAIN SEWAGE 3 WIDE (DPI182086)
- Ⓢ EASEMENT TO DRAIN SEWAGE 3 WIDE

**SURVEYING & SPATIAL INFORMATION REGULATION 2012 CLAUSE 35(1)(b), 61(2), 19 & 62**

MARK	M.G.A. CO-ORDINATES ZONE 55		CLASS	ORDER	ORIGIN
	EASTING	NORTHING			
SSM 125441	6977688.497	6317042.490	C	3	SCIMS
SSM 125442	6977223.588	6317153.088	C	3	SCIMS
SSM 138475	697735.257	6317253.242	C	3	SCIMS

SOURCE: M.G.A. CO-ORDINATES ADOPTED FROM SCIMS ON 13/01/2014  
 COMBINED SEA LEVEL & SCALE CORRECTION FACTOR 0.999943

Surveyor: PHILIP H SEARL  
 Date of Survey: 13/01/2014  
 Surveyor's Ref: 214009\_01A

PLAN OF SUBDIVISION OF LOT 774 IN DPI182086  
**CA5041 - 24/2/2014**

LGA: ORANGE  
 Locality: ORANGE  
 Subdivision No: 5041  
 Lengths are in metres. Reduction Ratio 1:500

Registered  
 27.03.2014

**DP1194589**

Box:e-DeX /Doc:DP 1194589 P /Rev:28-Mar-2014 /Sts:SC,OK /Prt:29-Mar-2014 01:50 /Fgs:ALL /Seq:1 of 3  
 WARNING : Electronic Document supplied by LPI NSW for Your Internal Use Only.