

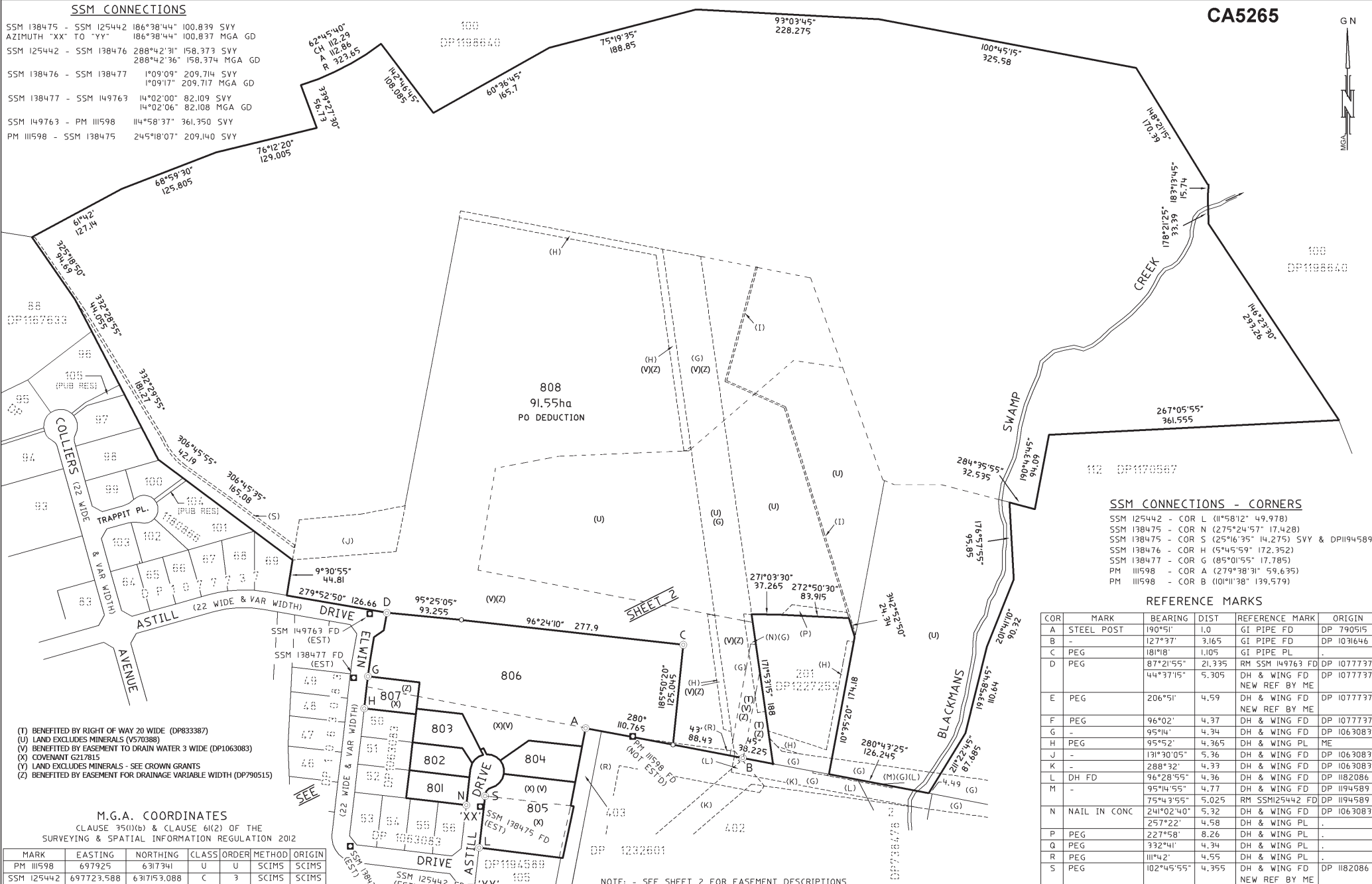
CA5265



SSM CONNECTIONS

SSM 138475 - SSM 125442 186°38'44" 100.839 SVY
 AZIMUTH "XX" TO "YY" 186°38'44" 100.837 MGA GD
 SSM 125442 - SSM 138476 288°42'31" 158.373 SVY
 288°42'36" 158.374 MGA GD
 SSM 138476 - SSM 138477 1°09'10" 209.714 SVY
 1°09'17" 209.717 MGA GD
 SSM 138477 - SSM 149763 14°02'00" 82.109 SVY
 14°02'06" 82.108 MGA GD
 SSM 149763 - PM 111598 114°58'37" 361.350 SVY
 PM 111598 - SSM 138475 245°18'07" 209.140 SVY

Box:e-DeX /Doc:DP 1240445 P /Rev:05-Mar-2018 /Sts:SC,OK /Prt:06-Mar-2018 01:20 /Fgs:ALL /Seq:1 of 6
 WARNING : Electronic Document supplied by NSW LRS for Your Internal Use Only.



SSM CONNECTIONS - CORNERS

SSM 125442 - COR L (11°58'12" 49.978)
 SSM 138475 - COR N (275°24'57" 17.428)
 SSM 138475 - COR S (25°16'35" 14.275) SVY & DP1194589
 SSM 138476 - COR H (5°45'59" 172.352)
 SSM 138477 - COR G (85°01'55" 17.785)
 PM 111598 - COR A (279°38'31" 59.635)
 PM 111598 - COR B (101°11'38" 139.579)

REFERENCE MARKS

COR	MARK	BEARING	DIST	REFERENCE MARK	ORIGIN
A	STEEL POST	190°51'	1.0	GI PIPE FD	DP 790515
B	-	127°37'	3.165	GI PIPE FD	DP 1031646
C	PEG	181°18'	1.105	GI PIPE PL	.
D	PEG	87°21'55"	21.335	RM SSM 149763 FD	DP 1077737
		44°37'15"	5.305	DH & WING FD	DP 1077737
E	PEG	206°51'	4.59	DH & WING FD	DP 1077737
F	PEG	96°02'	4.37	DH & WING FD	DP 1077737
G	-	95°14'	4.34	DH & WING FD	DP 1063083
H	PEG	95°52'	4.365	DH & WING PL	ME
J	-	131°30'05"	5.36	DH & WING FD	DP 1063083
K	-	288°32'	4.37	DH & WING FD	DP 1063083
L	DH FD	96°28'55"	4.36	DH & WING FD	DP 1182086
M	-	95°14'55"	4.77	DH & WING FD	DP 1194589
		75°43'55"	5.025	RM SSM125442 FD	DP 1194589
N	NAIL IN CONC	241°02'40"	5.32	DH & WING FD	DP 1063083
P	PEG	257°22'	4.58	DH & WING PL	.
Q	PEG	227°58'	8.26	DH & WING PL	.
R	PEG	332°41'	4.34	DH & WING PL	.
R	PEG	111°42'	4.55	DH & WING PL	.
S	PEG	102°45'55"	4.355	DH & WING FD	DP 1182086

- (T) BENEFITED BY RIGHT OF WAY 20 WIDE (DP83387)
- (U) LAND EXCLUDES MINERALS (V570388)
- (V) BENEFITED BY EASEMENT TO DRAIN WATER 3 WIDE (DP1063083)
- (X) COVENANT 6217815
- (Y) LAND EXCLUDES MINERALS - SEE CROWN GRANTS
- (Z) BENEFITED BY EASEMENT FOR DRAINAGE VARIABLE WIDTH (DP790515)

M.G.A. COORDINATES
 CLAUSE 35(1)(b) & CLAUSE 61(2) OF THE
 SURVEYING & SPATIAL INFORMATION REGULATION 2012

MARK	EASTING	NORTHING	CLASS	ORDER	METHOD	ORIGIN
PM 111598	697925	6317341	U	U	SCIMS	SCIMS
SSM 125442	697723.588	6317153.088	C	3	SCIMS	SCIMS
SSM 138475	697735.257	6317253.242	C	3	SCIMS	SCIMS
SSM 138476	697573.592	6317203.888	B	2	SCIMS	SCIMS
SSM 138477	697577.818	6317413.550	C	3	SCIMS	SCIMS
SSM 149763	697597.729	6317493.202	C	3	SCIMS	SCIMS

SOURCE: SCIMS 18th APRIL 2017
 COMBINED SCALE FACTOR : 0.999942 ZONE 55

Surveyor: TIMOTHY COLLINS
 Date of Survey: 19th JUNE 2017
 Surveyor's Reference: 21210

PLAN OF SUBDIVISION OF LOT 200 DP1227253,
 LOT 76 DP 1077737 AND LOT 772 DP1182086
CA5265 - 12/02/2018

LGA: ORANGE
 Locality: ORANGE
 Subdivision No: 5265
 Lengths are in metres. Reduction Ratio 1 : 3000

Registered
 5.03.2018

DP1240445

10	20	30	40	50	60	70	80	90	100
----	----	----	----	----	----	----	----	----	-----

Table of mm